

Save and share photos

Share albums with friends and family, or showcase your photos on social media (**Figure 1**). It's easy in Lightroom CC, whether you're using the built-in sharing tools from your computer, your mobile device, or the web.

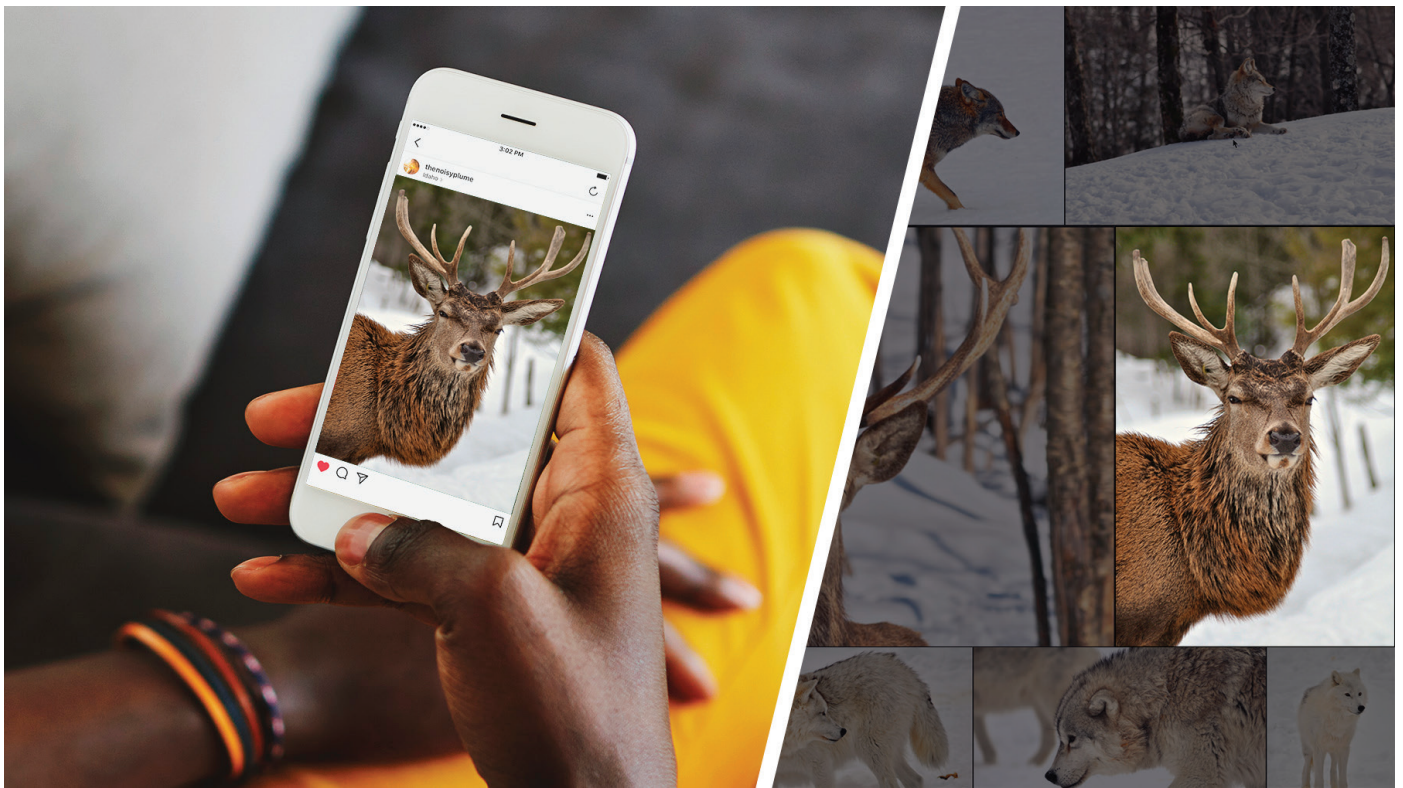


Figure 1 Sharing a Lightroom CC image on social media

In this guide, you'll learn how to save photos to your computer, and share photos to Facebook. Web galleries is another easy way to share photos with friends and family. While not documented in this guide, saving and sharing photos and web galleries from your mobile device is just as easy doing so from Lightroom CC for desktop.

Save your photos to your computer

In Photoshop Lightroom CC, you choose to save your edited photos as JPEGs (small, maximum, or custom size) or as full-sized originals. You can save to a folder on a computer or to an attached or networked drive, such as a Flash drive.

When you save photos, you create new image files that include the edits and other metadata changes you've made to the photos.

To save photos from Lightroom CC to a computer:

1. Start Lightroom CC.
2. Select one or more photos to save from the Photo Grid, Square Grid, or Detail views (**Figure 2**):
 - If you're in Photo Grid view or Square Grid view, select the photo that you want to save. Control-click to select multiple photos.
 - If you're in Detail view, select the photo that you want to save from the filmstrip. Control-click to select multiple photos.

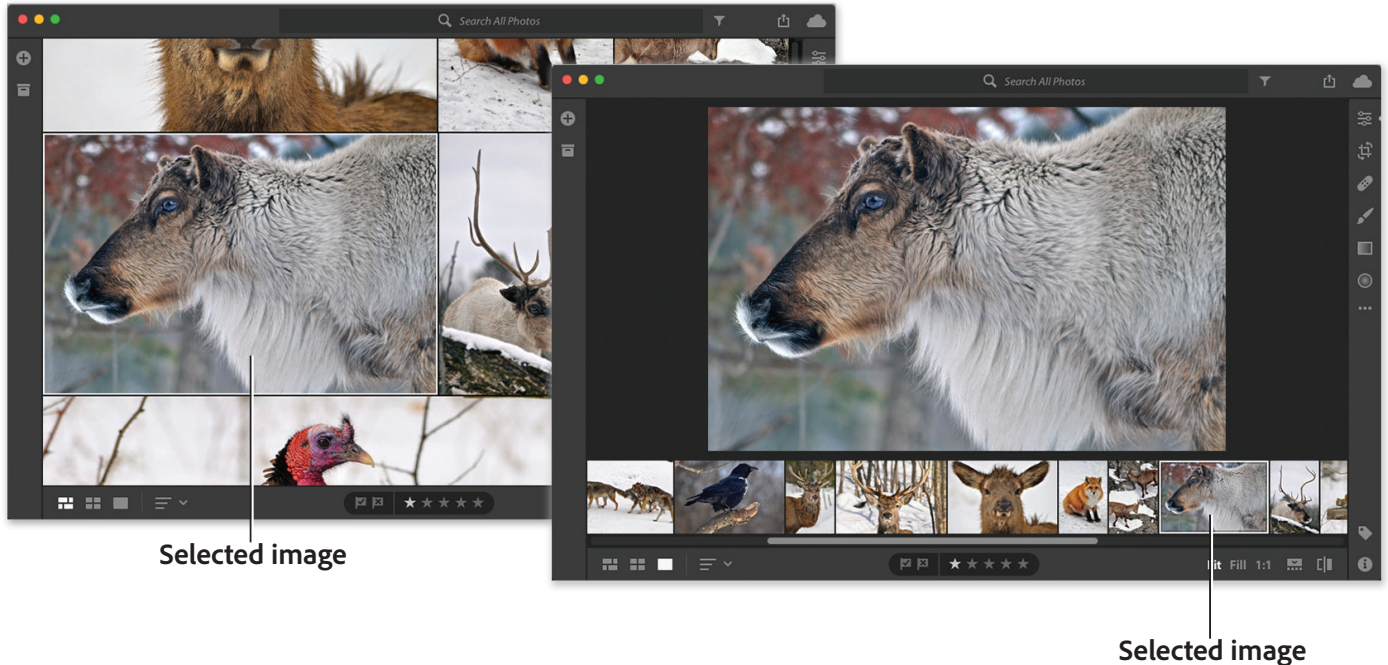


Figure 2 Lightroom CC Photo Grid (left) and Detail view (right)

3. Click the Share icon at the upper-right corner and choose **Save To** from the menu that appears (**Figure 3**).

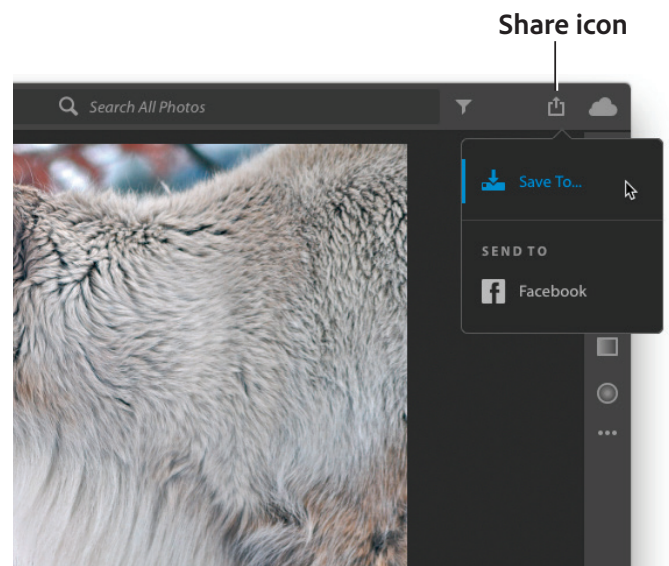


Figure 3 Share menu

4. In the **Save** dialog box (**Figure 4**), specify the following:
 - **File Type** Choose **JPEG** to save the photo in .JPG format. Choose **Original + Settings** to save the photo as full-size original.
 - **Location** Save at the default location or select another folder to save the photo. The default location is:
 - **Win:** C:\Users\[user name]\Pictures\
Lightroom CC Saved Photos
 - **Mac:** /Users/[user name]/Pictures/
Lightroom CC Saved Photos
 - **Size** You can specify a size if you've chosen **File Type** as **JPEG**. Choose any of the following from the drop-down list:
 - **Small:** Limits the length of the saved JPEG photos to 2048 pixels. The breadth is scaled accordingly to maintain the original aspect ratio.
 - **Full Size:** Exports the selected photos in highest available quality in JPEG format.
 - **Custom:** Applies the specified pixel value to the long edge of the photo and uses the original aspect ratio of the photo to calculate the other edge. The long edge value can't exceed 65,000 pixels.

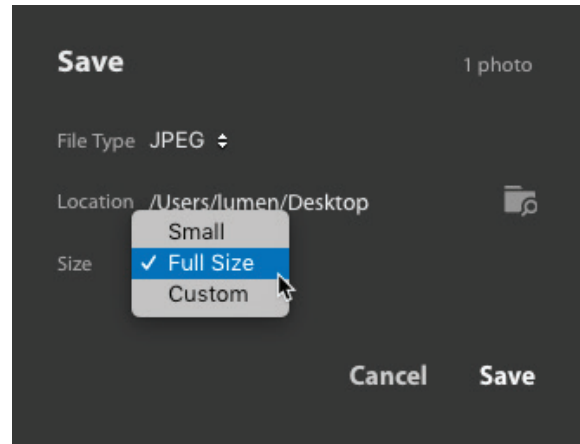


Figure 4 The Save dialog box



Figure 5 The saved JPEG file

5. After specifying the options, click **Save**.
6. The file is saved to the location you specified (**Figure 5**).

Share photos on Facebook

To send photos to Facebook from Photoshop Lightroom CC to share with friends and family, follow these basic steps.

To share photos on Facebook:

1. Select one or more photos to save from the Photo Grid, Square Grid, or Detail views (**Figure 2**):
 - If you're in Photo Grid view or Square Grid view, select the photo that you want to save. Control-click to select multiple photos.
 - If you're in Detail view, select the photo that you want to save from the filmstrip. Control-click to select multiple photos.

2. Click the Share icon at the upper-right corner and choose **Send To > Facebook** from the menu that appears (**Figure 6**).
3. Authorize Lightroom CC to access your Facebook account (required when sharing for the first time) (**Figure 7**). Click **Go To Facebook** and follow the prompts on facebook.com. After linking your Facebook account (**Figure 8**), you can return to Lightroom CC to complete the sharing process.
4. Enter photo caption and choose a Facebook album. In the **Share To Facebook** dialog box (**Figure 9**), choose the following:
 - **Caption** Enter a photo caption to display on Facebook.
 - **Post Photos To** Choose **Timeline Photos** to share photos on your timeline or choose any of your existing Facebook albums from the drop-down list

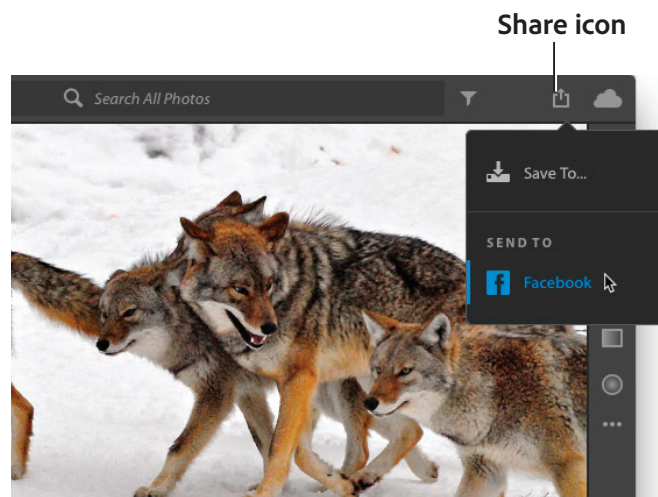


Figure 6 Share menu

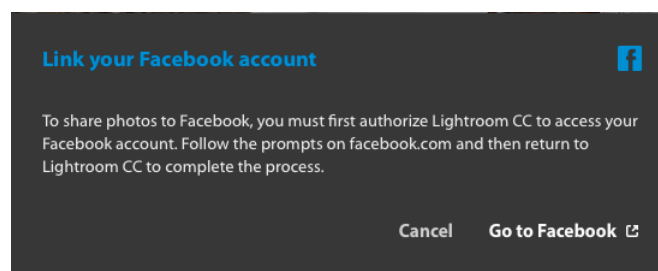


Figure 7 Link To Facebook Account dialog box

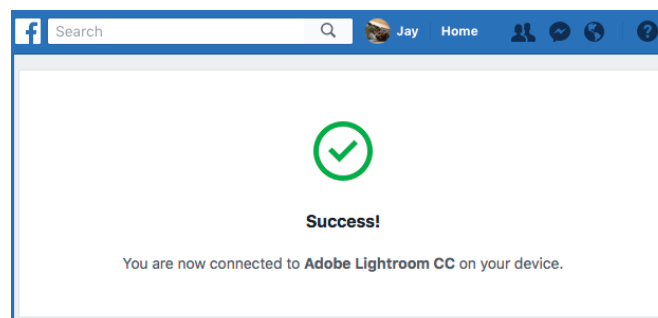


Figure 8 Adobe Lightroom CC authorization

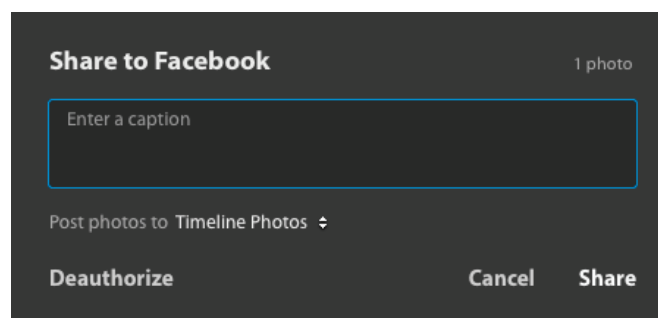


Figure 9 Share To Facebook dialog box

5. Click **Share** in the **Share To Facebook** dialog box.
Your photos are shared to Facebook (**Figure 10**).

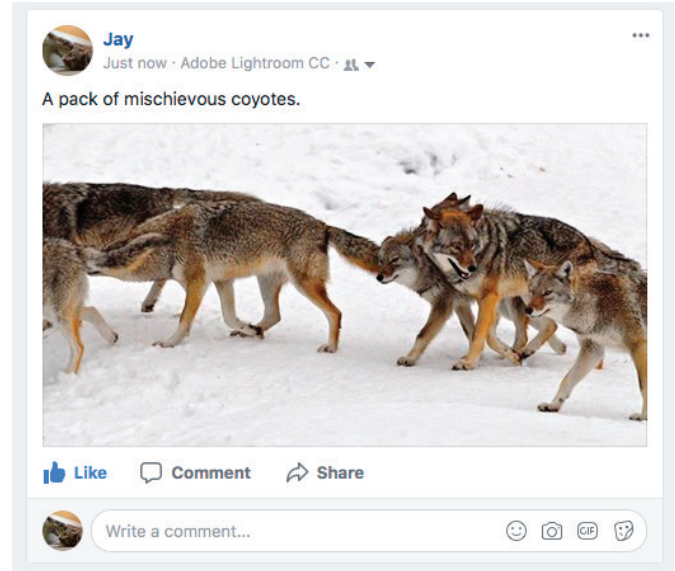


Figure 10 Shared Lightroom CC photo on Facebook

Share albums on the web

Lightroom CC makes it easy to create web galleries from your photo albums to share with friends and family.

To share albums on the web:

1. In Photo Grid view or Square Grid view, select the **My Photos** icon to open the **My Photos** and **Albums** panel. The **My Photos** and **Albums** panel opens (**Figure 11**).

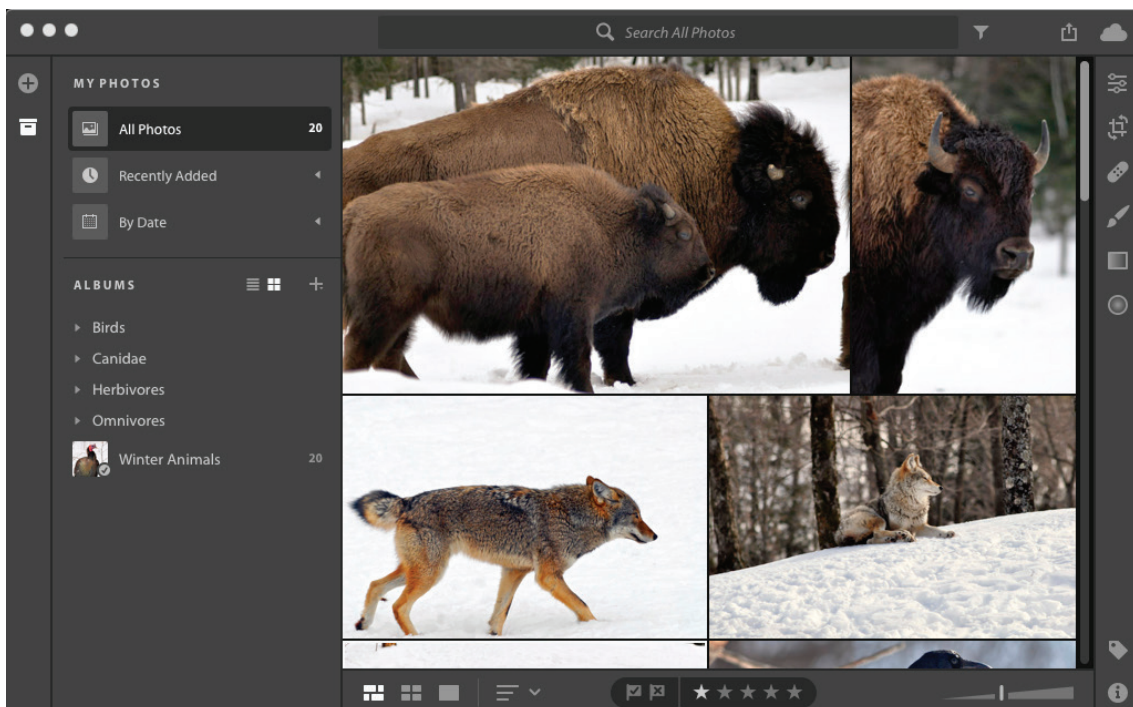


Figure 11 My Photos and Albums panel and Photo Grid view

2. In the **Albums** panel, right-click an album and choose **Share Album** (Figure 12).

The **Shared Album** dialog box opens and displays a URL (Figure 13).

3. Click the Copy button to save the URL to the clipboard. Paste the URL to share via your favorite social media channels or in an email.

Note: You can stop sharing an album at any time by right-clicking it and choosing Stop Sharing.

4. Click the **Close** button.

Your web gallery is now ready to view (Figure 14).

Note: You can see the [sample Winter Animals web gallery here](#). Click the **Slideshow** button to view the gallery in slideshow mode.

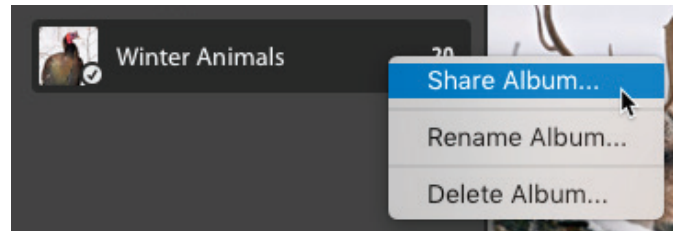


Figure 12 Album context menu

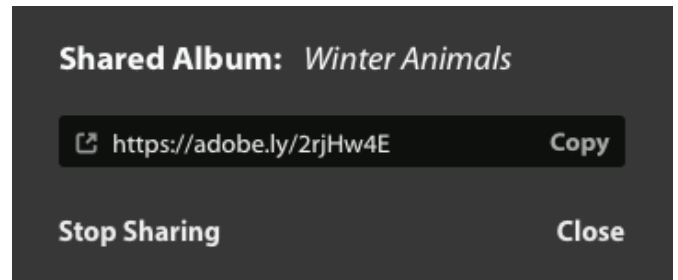


Figure 13 Shared Album dialog box

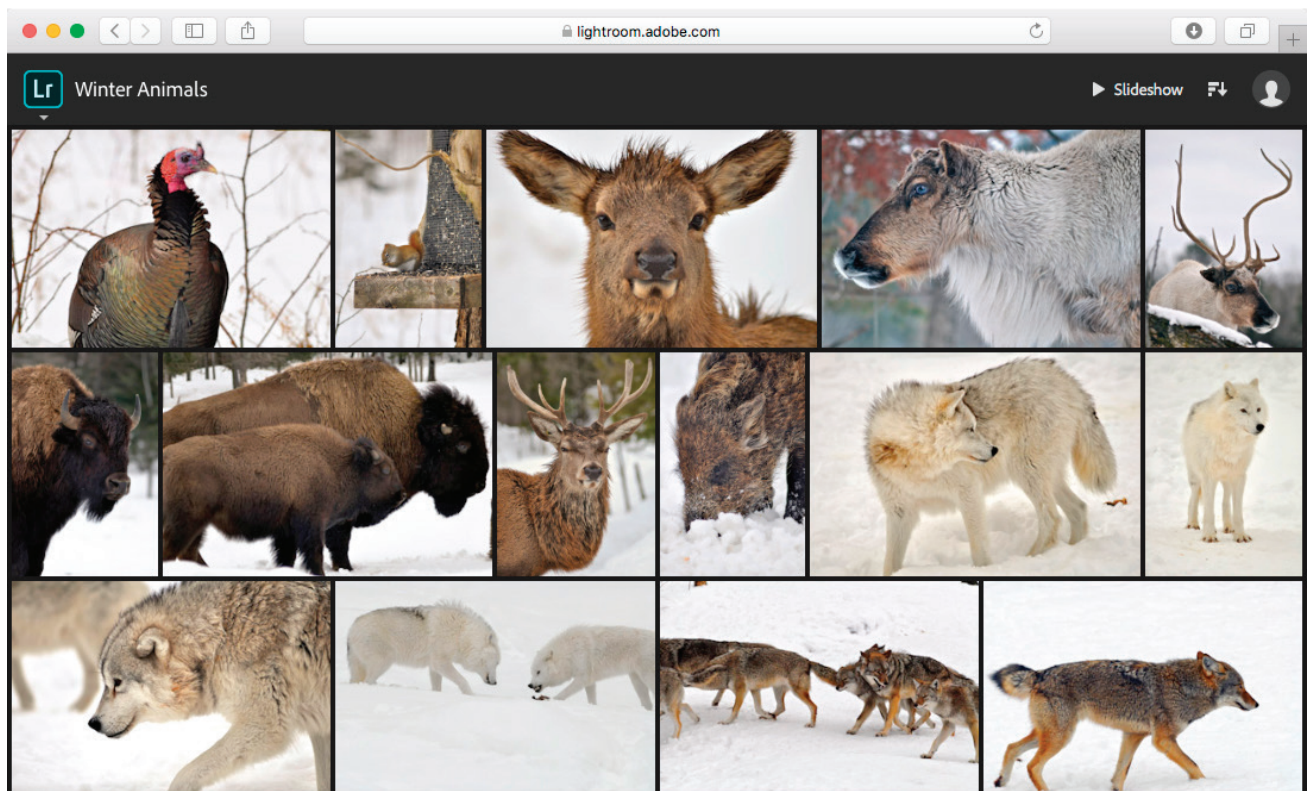


Figure 14 My Photos and Albums panel and Photo Grid view

For more information

Get instant access to free courses, workshops, & teaching materials and connect with the creative education community on the Adobe Education Exchange: <https://edex.adobe.com/>.



Adobe

Adobe Systems Incorporated
345 Park Avenue
San Jose, CA 95110-2704
USA
www.adobe.com

Adobe and the Adobe logo are either registered trademarks or trademarks of Adobe Systems Incorporated in the United States and/or other countries. All other trademarks are the property of their respective owners.

© 2018 Adobe Systems Incorporated. All rights reserved.

This work is licensed under a Creative Commons Attribution-Noncommercial-Share Alike 3.0 Unported License.