

Overview of Adobe Lightroom CC

Adobe Lightroom CC is an all-in-one photo service that allows you to access, edit, organize, and share your photos from your computer, mobile device, or web browser. The changes you make on one device automatically synchronize so you can access the latest photo edits from anywhere (**Figure 1**).



Figure 1 Synchronized photos across your computer and mobile devices

Lightroom CC makes it easy for you to add, view, edit, and share your photos from any of your devices at home, school, and beyond. When you add new photos to the app, all your devices are automatically updated. Tap the camera icon to take a photo with the in-app camera. Edit full-resolution photos on mobile devices, the web, or your desktop and see the changes applied everywhere else. Keep your collection organized with keywords, albums, and folders. Share your photos to web galleries, slideshows, and social media. Open photos in Photoshop from Lightroom CC when you need to do advanced image editing, retouching, adding graphics or text, or using your photos in other creative projects.

This guide is a quick introduction to the Lightroom CC interface, and how you can add images to the library. In other guides in the series, you'll learn the basics of how to edit, organize, share, and use Lightroom CC images in Photoshop.

What you'll need

When you first launch Lightroom CC, you'll see a default image collection in the workspace. You can follow along using those photos or [download the assets](#) used in this and the other Lightroom CC guides in this series. You can also work through the steps using your own photos.

These guides use both the Lightroom CC desktop and mobile apps. If you haven't already done so, create and/or sign in with your [Adobe ID](#) and download the apps for desktop and mobile devices:

- [Lightroom for desktop](#)
- [Lightroom CC for iPad](#)
- [Lightroom CC for iPhone](#)
- [Lightroom CC for Android](#)

Exploring the workspace

If it's your first time opening Lightroom CC, the workspace will display the Marina visit collection of photos (**Figure 2**). Here's an overview of the main elements that make up the desktop workspace:

- **Photos and albums** Import photos from your computer or a connected device, and sort into albums.
- **Search bar and Filter** Find photos by metadata and keywords in the Search bar, or click the filter icon to search by rating, keywords, and other settings.
- **Sharing** Save photos to the desktop, or share via Facebook.
- **Cloud** Provides updates on storage, links for device connections, and sync status.
- **Tools panel** Access photo edit controls like Light, Color, Effects, Detail, Optics, and Geometry. Other tools include Crop & Rotate, Healing Brush, Paint Brush, Linear and Radial Gradients.
- **View mode** Display photos in a thumbnail grid, square grid with status info, or individual detail view.

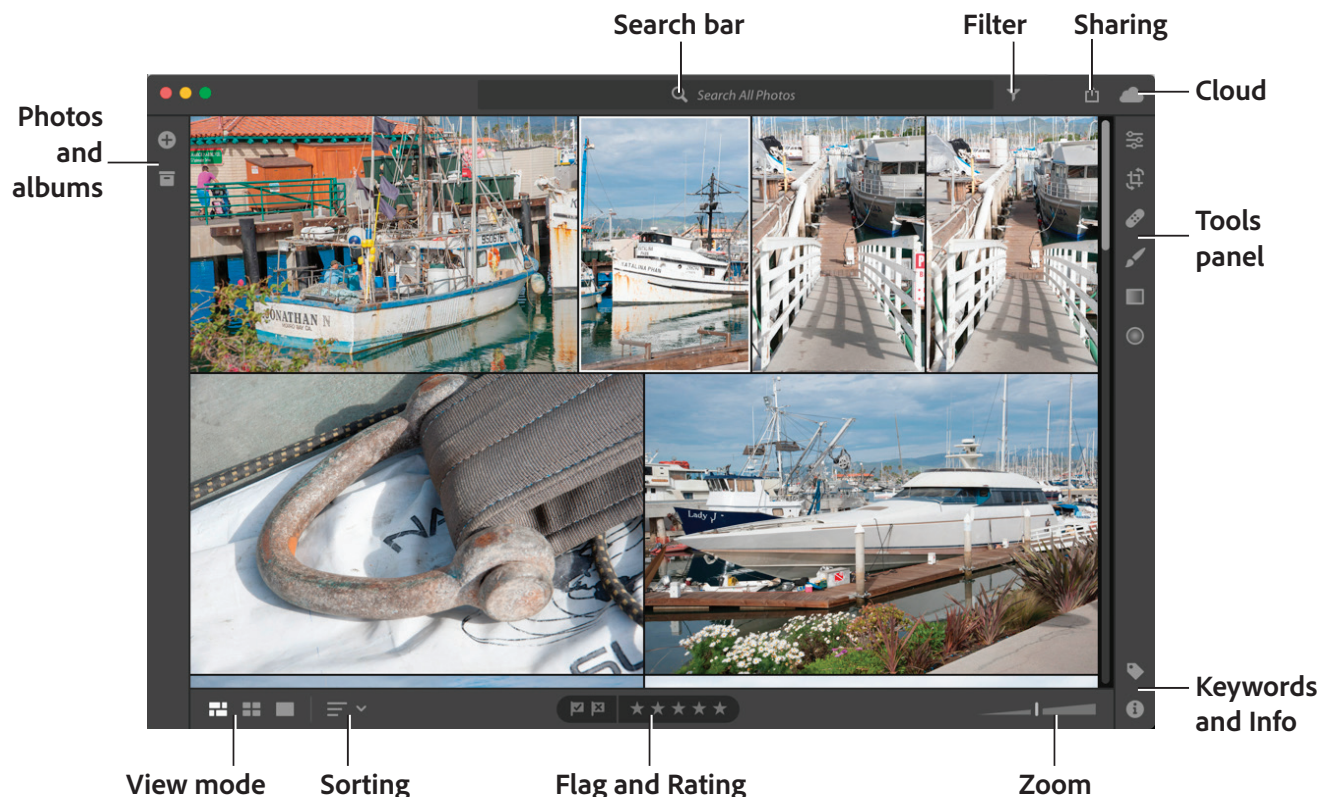


Figure 2 Lightroom CC desktop interface

- **Sorting** Provides options to display by capture, import, or modified date, or by star rating.
- **Flag and Rating** Apply flags to pick and star to rate individual or groups of photos.
- **Zoom** Change image sizes for thumbnail, grid, or detail view modes.
- **Keywords and Info** Use these panels to apply title, caption, copyright, keywords, and other information to your photos.

The Lightroom CC mobile workspace shares many of the same features and tools, panels, and settings but arranged on different screens and optimized for devices (**Figure 3**).

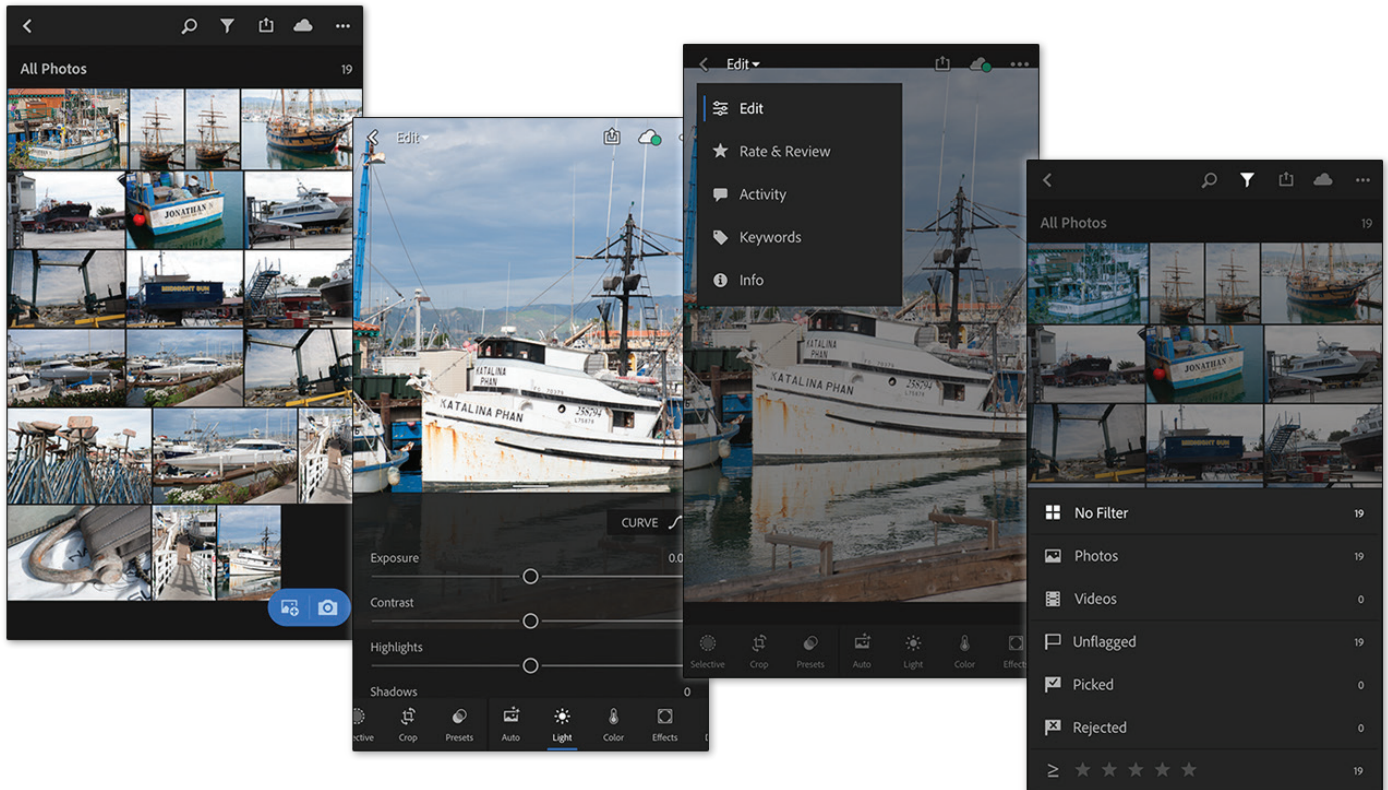


Figure 3 Lightroom CC iOS mobile interface

Note: The Lightroom for mobile interface may vary slightly depending on the version of the Lightroom app you have and whether you're using it on iOS or Android.

Get started using Lightroom CC

Adding photos to Lightroom CC involves a few simple selecting and importing steps. When an image is added, Lightroom CC makes a copy of the photos imported and uploads your full resolution original photos to the cloud. Once you've imported the photos, you can consider deleting or moving the originals from their source, such as the memory card. When you add photos to Lightroom CC, they're automatically available on all your devices. Lightroom sorts photos by the date on which they were taken.

In this section, you add photos from a computer, camera, and/or mobile device, and then view your photos on other devices.

To add photos to Lightroom CC:

1. Start Lightroom CC and sign into your account on both your desktop and mobile devices.
2. Follow these steps to select photos from your computer, a connected camera, or mobile device and add them to Lightroom CC.

To add photos from your computer:

- Click the + **Add Photos** button in the upper left (**Figure 4**) and browse to the location of the downloaded sample photos, or your own photos accessible on your computer.
- In the Import dialog box that opens, select the images or folders you want to add, and then click **Review for Import** (**Figure 5**).
- You're looking at previews of your images (**Figure 6**). In this screen, you can select the images you'd like to add to Lightroom CC. Click to uncheck any photos you don't want to include, and then click **Add Photos**.

To add photos from a camera device:

- Connect the camera or card reader to your computer.
- Click the + **Add Photos** button at the upper-left corner of the window (**Figure 4**).
- In the Import dialog box that opens, select the images or folders you want to add, and then click **Review for Import** (**Figure 5**).
- You're looking at previews of your images (**Figure 6**). In this screen, you can select the images you'd like to add to Lightroom CC. Click to uncheck any photos you don't want to include, and then click **Add Photos**.

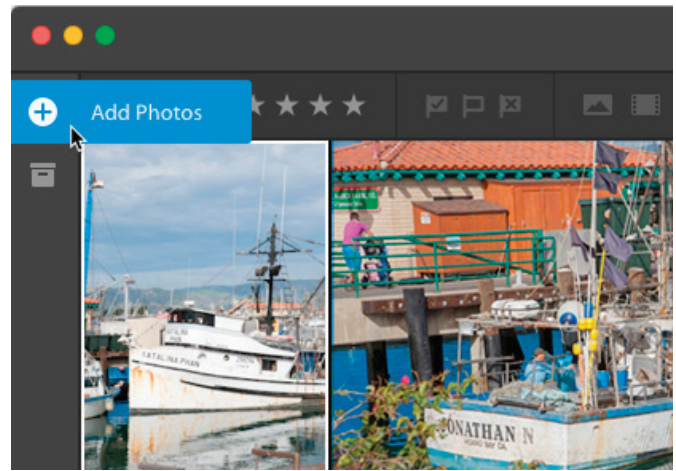


Figure 4 The + Add Photos button

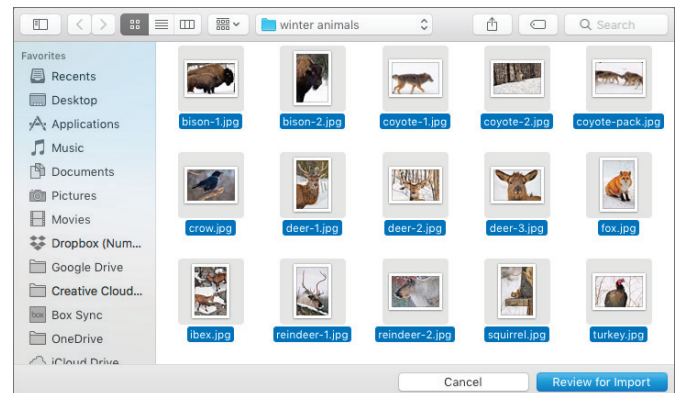


Figure 5 The Import dialog box

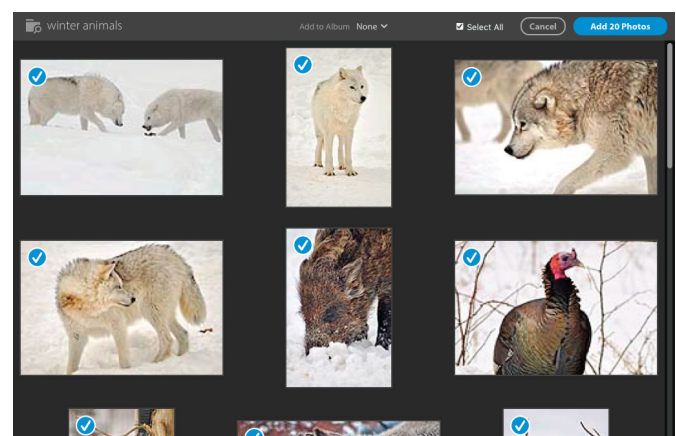


Figure 6 Import previews

To add photos from your mobile device:

- Tap the Add Photos icon, then **Camera Roll**. Or, tap the camera icon to take a photo with the in-app camera (**Figure 7**).
- Select the photos on your mobile phone you want to add — tap individual thumbnails, or swipe across images to select multiple photos.
- Once you've made your selections, tap **Add Photos** to import them.

Your recently added photos are displayed in Photo Grid.

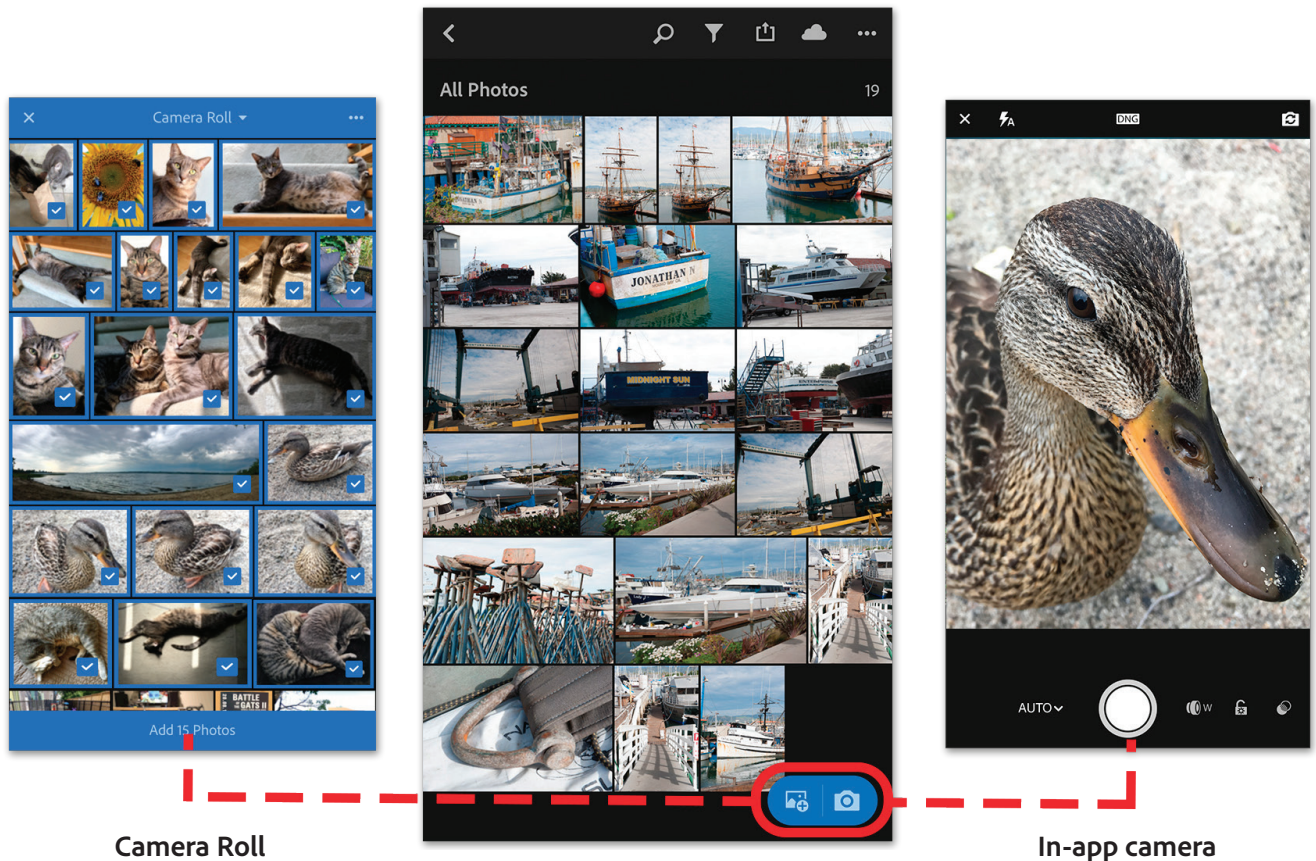


Figure 7 Adding photos from a mobile device controls

3. (Optional) If you want to remove the default set of Lightroom CC images, return to the All Photos screen in the desktop app and **Ctrl-click** (Windows) or **Command-click** (Mac OS) and select the images, then choose **Edit > Delete Photos**.

A dialog box opens asking if you want to permanently delete photos (**Figure 8**). If so, click **Delete Photos** to remove the photos.

4. When you're finished editing the Lightroom CC library on the desktop, check your photo collection on your mobile device.

Your photo library is now synchronized.

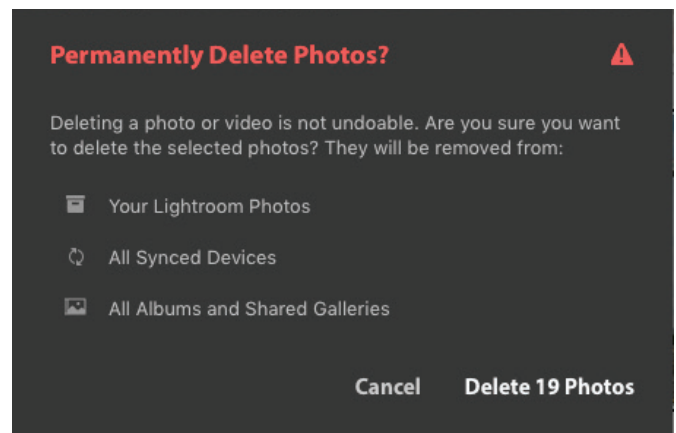


Figure 8 Permanently Delete dialog box

Migrate photos and videos from Lightroom Classic CC to Lightroom CC

If you've already used a previous version of Lightroom, you might know that the application now comes in two distinct flavors:

- **Lightroom CC**, an all-in-one service where your photos are stored in their full resolution centrally in the cloud, and synced with your computers and devices when you're working on them.
- **Lightroom Classic CC** is a database application containing a catalog and records for each of your photos and videos you may have imported. A record in the catalog includes a reference to where the photo lives on your system; your instructions for processing the photo—for instance, the adjustments you applied; and photo metadata, such as keywords and ratings.

You can easily migrate your catalogs from Lightroom Classic CC to Lightroom CC (**Figure 9**). When you do so, Lightroom CC brings in each of your photos included in the catalog and uploads it to the cloud in its full resolution for access across multiple devices and computers. Later, to save on disk space, you can even consider deleting those photos from the local storage on your device.



Figure 9 Migrating photos from Lightroom Classic CC to Lightroom CC

When migration is complete, Lightroom CC displays a confirmation dialog. You can now edit, organize, and share your photos using Lightroom CC and take full advantage of the power of device synchronization and cloud computing.

To learn how to how to transition you photos, please see Adobe Help [Migrate photos and videos from Lightroom Classic CC to Lightroom CC](#).

For more information

Get instant access to free courses, workshops, & teaching materials and connect with the creative education community on the Adobe Education Exchange: <https://edex.adobe.com/>.



Adobe Systems Incorporated
345 Park Avenue
San Jose, CA 95110-2704
USA
www.adobe.com

Adobe and the Adobe logo are either registered trademarks or trademarks of Adobe Systems Incorporated in the United States and/or other countries. All other trademarks are the property of their respective owners.

© 2018 Adobe Systems Incorporated. All rights reserved.

This work is licensed under a Creative Commons Attribution-Noncommercial-Share Alike 3.0 Unported License.