

SYMMETRY

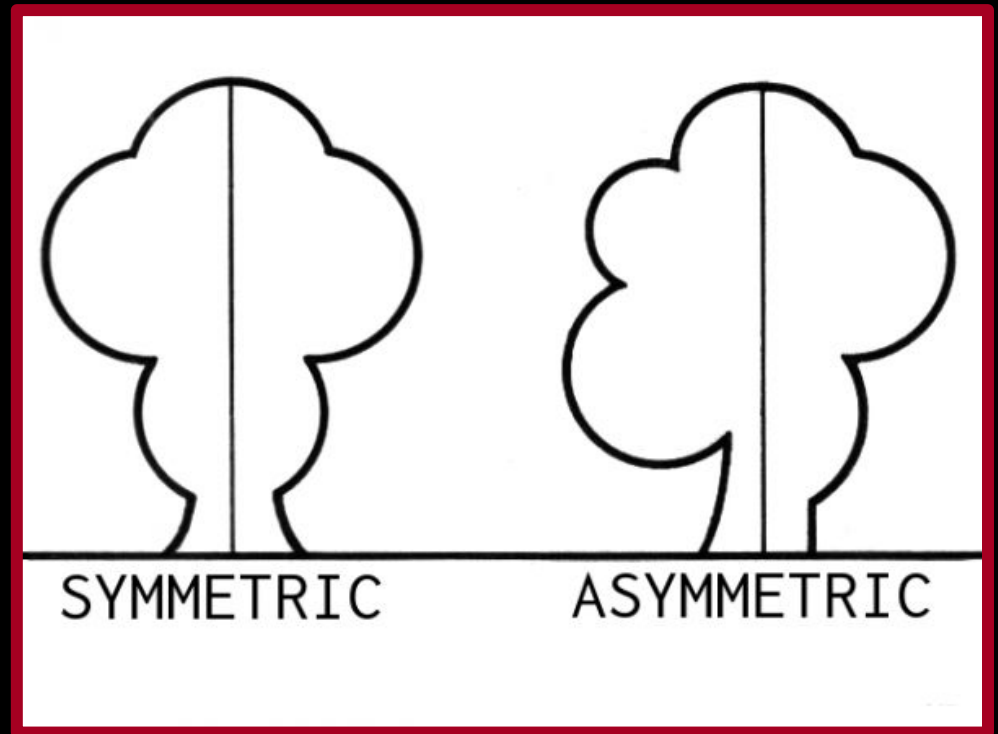
Camera



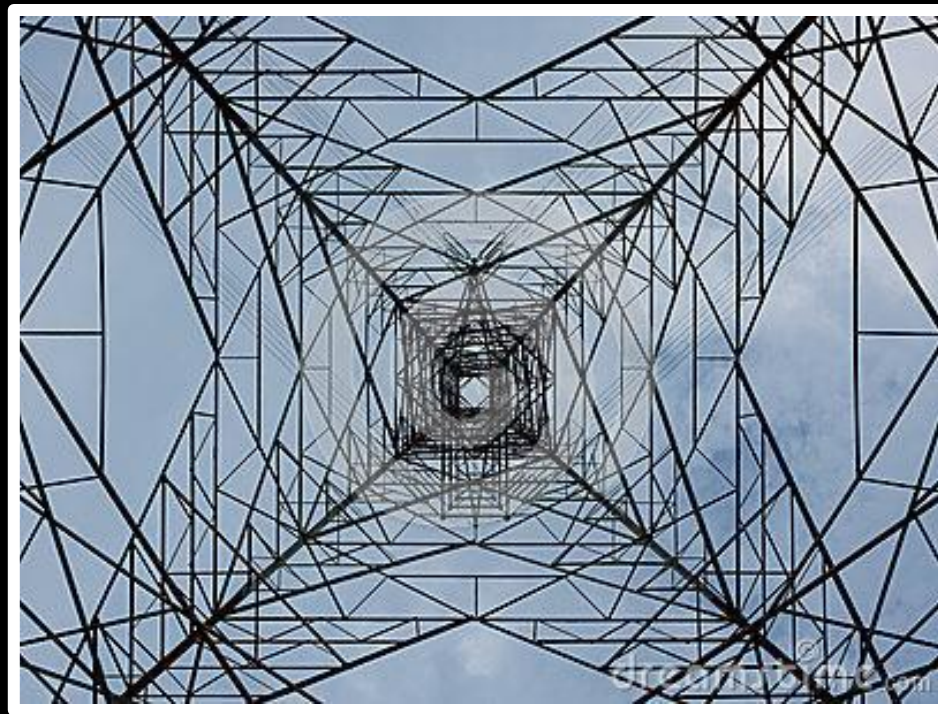
ELEMENTS OF
COMPOSITION
IN PHOTOGRAPHY

SYMMETRY refers to a line that splits an object in half and, if both sides of the object are an exact mirror image of each other, then this object is said to be symmetrical.

You probably remember learning about symmetry in geometry class.



We are surrounded by symmetry and patterns, both in nature and in the built environment.



Symmetry can be either:

- **vertical (left and right halves symmetrical)**
- **horizontal (top and bottom symmetrical)**
- **or both**



Symmetry is a powerful tool that lets you automatically create harmony and a sense of balance and proportion in a photograph.



Symmetry is all around us and has always been associated with beauty, so why not use it?



Symmetry requires an eye-catching point of interest and a powerful composition.



